

UNIT, DIRECT SUPPORT, AND GENERAL SUPPORT MAINTENANCE  
REPAIR PARTS AND SPECIAL TOOLS LIST  
TRUCK, 5-TON, 6X6, M809 SERIES TRUCKS (DIESEL)

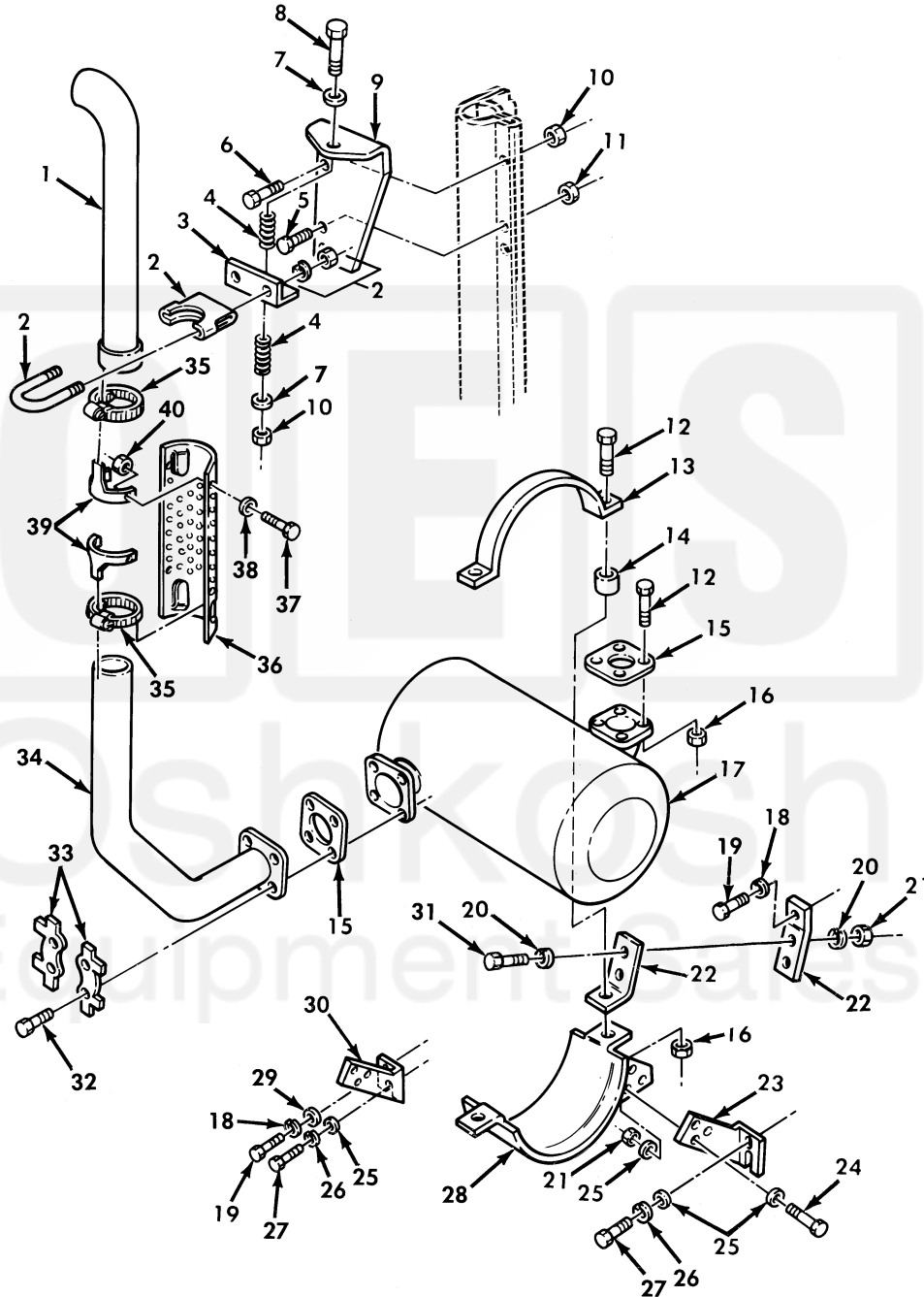


Figure 79. Vertical Exhaust System.

| (1)<br>ITEM<br>NO | (2)<br>SMR<br>CODE | (3)<br>NSN       | (4)<br>CAGEC | (5)<br>PART<br>NUMBER | (6)<br>DESCRIPTION AND USABLE ON CODE (UOC)  | (7)<br>QTY |
|-------------------|--------------------|------------------|--------------|-----------------------|--|------------|
| 36                | PAOZZ              | 2990-00-134-4660 | 19207        | 11664340              | GUARD,MUFFLER-EXHAU.....<br>UOC: 614, 620, 622, 623, 624, 625, 626, 627, 628,<br>629, 630, 631, 632, 633, 634, 635, 637, 638 | 1          |
| 37                | PAOZZ              | 5305-00-267-8953 | 80204        | B1821BH025F063N       | SCREW,CAP,HEXAGON H.....<br>UOC: 614, 620, 622, 623, 624, 625, 626, 627, 628,<br>629, 630, 631, 632, 633, 634, 635, 637, 638 | 4          |
| 38                | PAOZZ              | 5310-00-809-4058 | 96906        | MS27183-10            | WASHER, FLAT.....<br>UOC: 614, 620, 622, 623, 624, 625, 626, 627, 628,<br>629, 630, 631, 632, 633, 634, 635, 637, 638        | 4          |
| 39                | PAOZZ              | 5342-00-134-8305 | 19207        | 11677589              | BRACKET,EXHAUST SHI.....<br>UOC: 614, 620, 622, 623, 624, 625, 626, 627, 628,<br>629, 630, 631, 632, 633, 634, 635, 637, 638 | 2          |
| 40                | PAOZZ              | 5310-00-061-7325 | 96906        | MS21045-4             | NUT,SLFLKG HEXAGON.....<br>UOC: 614, 620, 622, 623, 624, 625, 626, 627, 628,<br>629, 630, 631, 632, 633, 634, 635, 637, 638  | 4          |

END OF FIGURE

